



LITERACY TEXAS
2024 ANNUAL ★ CONFERENCE
 July 30 & 31, San Marcos, TX

#LITTX24
"LITERACY & BEYOND"

2024 CONFERENCE SCHEDULE AT A GLANCE

PRE-CONFERENCE: MONDAY, JULY 29, 2024

| | |
|-------------------|---|
| 4:00 pm | Hotel check-in opens Conference registration opens |
| 5:30 pm - 7:00 pm | Conference VIP Reception Exhibitor Hall (Veramendi F) <i>Thank you to Data Recognition Corporation, sponsor of the VIP Reception photobooth!</i> |

CONFERENCE DAY 1: TUESDAY, JULY 30, 2024

| | |
|---------------------|--|
| 7:00 am - 8:00 am | Exhibitor Hall open (Veramendi F), conference check-in open Breakfast (complimentary with hotel stay) |
| 8:00 am - 8:35 am | CONFERENCE OPENING SESSION Veramendi G - J "State of the State in Adult Literacy" - Mahalia Baldini , Texas Workforce Commission |
| 8:55 am - 10:25 am | Breakout 1 (90 min) |
| 10:40 am - 11:55 am | Breakout 2 (75 min) |
| 12:15 pm - 1:25 pm | BUFFET LUNCH & SPEAKERS Veramendi G - J "Literacy & Beyond Through Multiple Lenses" - Jacqueline Aguilera , Vicki Clark , Fran-Victoria Stephens |
| 1:45 pm - 3:00 pm | Breakout 3 (75 min) |
| 3:15 pm - 4:15 pm | Breakout 4 (60 min) |
| 4:20 pm - 4:50 pm | Vendor Lightning Rounds Exhibitor Hall (Veramendi F) |
| 5:00 pm | Attendees go to dinner - explore San Marcos! |

CONFERENCE DAY 2: WEDNESDAY, JULY 31, 2024

| | |
|---------------------|---|
| 7:00 am - 8:00 am | Exhibitor Hall open (Veramendi F), breakfast Check out and store bags |
| 8:00 am - 9:30 am | Breakout 5 (90 min) |
| 9:45 am - 11:00 am | Breakout 6 (75 min) |
| 11:20 am - 12:35 pm | LUNCH & ANNUAL AWARDS Veramendi G - J Annual Award presentations; Student and Volunteer Speakers |
| 12:55 pm - 2:10 pm | Breakout 7 (75 min) |
| 2:25 pm - 3:25 pm | Breakout 8 (60 min) |
| 3:30 pm | Final prize drawing, farewell Spring Lake C |

THERE'S AN APP FOR THAT!
FIND THE 2024 LITERACY TEXAS
CONFERENCE APP AT:
[LITERACYTEXAS.ORG/APP](https://literacytexas.org/app)

Dear friends of Literacy Texas:

I attended my first Literacy Texas conference three years ago. At the time, I was a fairly new Executive Director of a CBO, and even though I had decades of experience teaching in both public schools and in higher education, leading a non-profit and working in adult literacy threw me a few curve balls. I struggled to balance my deep desire for offering the high-quality programming that my students deserved with the realization that I had little more than a skeleton crew and a shoestring budget. This often left me feeling disheartened and wondering if I could ever really make a difference.

However, that all changed when I attended the Literacy Texas Annual Conference.

The knowledge and skills I learned there, along with the network I was able to begin building, gave me tools I desperately needed in my toolbelt to transform my organization and positively impact my students' experience. I came to that conference feeling overwhelmed, but I left feeling empowered, enlightened, and inspired. **I know I speak on behalf of the Literacy Texas team and the conference committee when I say that our greatest hope is that you leave here feeling those same sentiments.**

We have an incredible line-up of presenters, exhibitors, and activities that have all been chosen with YOU in mind. I celebrate you, your organization, and your students, and I'm so proud to walk beside you on Team Literacy.

With that, I want to welcome you to the 2024 Literacy Texas Annual Conference. I absolutely cannot wait to see what wonderful experiences come from the next two days!



Dr. Jenny McCormack Walker
Executive Director, Literacy Texas

FIND THE INFO YOU NEED

DAY 1 BREAKOUT SESSIONS ARE ON PAGES 6 - 13
DAY 2 BREAKOUT SESSIONS ARE ON PAGES 18 - 25
AND THERE'S A LOT MORE INFO ONLINE:
START AT [LITERACYTEXAS.ORG/CONFERENCE](https://literacytexas.org/conference)





...WELCOME TO
SAN MARCOS!

A FEW CONFERENCE HIGHLIGHTS...

Yeehaw!

Join us on Monday evening from 5:30 pm - 7:00 pm for our very own "Disco Rodeo"-themed VIP Reception! Wear your jeans and your bling (or whatever you like) and help us kick off the 2024 Literacy Texas Annual Conference in style. Our photobooth is back, thanks to sponsor Data Recognition Corporation, and we'll have light bites and drinks.



Let's take a walk...

Check out our gallery walk in the Exhibitor Hall to share your ideas and experiences (and to read others' as well!).

New questions will be posted each day, so remember to come back throughout the conference.

Our exhibitor friends have Post-It notes for you, and you can check your conference bag for a handy marker.



Take a deep breath

Did you know? Literacy Texas Executive Director Jenny Walker is also a practicing yoga instructor! Join Dr. Jenny at 7:00 am on Wednesday in Spring Lake B for 30 minutes of Morning Mindfulness.

This is a beginner-friendly, super easy class where participants will be seated in chairs. You'll learn some easy breathing techniques, simple seated stretches, and strategies for de-stressing. No equipment is required. Your regular conference attire will be perfectly fine to wear, and you'll still have time for breakfast!

STAYING IN - GOING OUT

When you're not busy learning, there's a lot to discover! Whether you want to browse the famous outlets (just down the road!), discover your new fave restaurant, or just find a quiet coffee, the best place to start is visitsanmarcos.com - it has all the info you need.

If you're staying at either of the conference hotels (Embassy or Holiday Inn), breakfast is included with your stay, and lunch is provided as part of your conference ticket. Join the VIP Reception for light bites on Monday evening, and then why not take some new friends with you when you go to dinner on Tuesday?



Back by popular demand - **Group Chat IRL** (In Real Life).

Get together in a small group and discuss current literacy trends – just like your favorite group chat on a messenger service, but face to face!

Come join a facilitated conversation on literacy topics that matter. Scan the QR code for info about this year's sessions.



DISCUSSION ★ IDEAS ★ NETWORKING

Educate & Elevate America

Literacy Texas is proud to partner with the Coalition on Adult Basic Education (COABE) to help add one million electronic signatures to the Educate & Elevate America Pledge in support of adult education.

Use this QR code to go directly to the website to add your name to the list - it's easy and takes less than 10 seconds:



intercambio
UNITING COMMUNITIES

TEACHING ENGLISH.
CONNECTING PEOPLE.

**ELEVATE YOUR ADULT ESOL PROGRAM WITH
OUR PROVEN CURRICULUM + TRAINING!**

- 4-skills, multi-level curriculum with conversation-based lessons
- Our *Immigrant Guide* contains valuable information on living in the U.S.
- Pronunciation Fun* uses minimal pairs for pronunciation practice
- Training, networking and support for new and established volunteer-based programs

Learn more at InterCambio.org

WHY “LITERACY & BEYOND”?

The conference theme and focuses come from **YOU**.

We use your responses to our Annual Survey to invite presenters, and to structure a program that best reflects what you need right now.

In 2023, we focused on innovation and possibility with “Literacy Unleashed”. Now in 2024, we’ll explore what comes next – bust some myths around narrow definitions of literacy, and look at both the expected and the unexpected places where literacy can transform lives.

- What’s universal in literacy? What’s changing?
- What role do new technologies like AI play in teaching and learning?

We’ll look at this topic from different angles and through multiple lenses with “Literacy and Beyond,” in sessions that explore the many ways the world can open up for Texas adults and families once they’ve achieved the literacy level they want and need.

TELL US WHAT YOU NEED!

The folks who responded to last year’s Annual Survey helped shape the theme and focus of this conference. **Now, you can be part of crafting the next one.**

Tell us what training you need, whether you prefer your professional development online or in-person, and more - and we’ll do our best to create a training schedule that’s responsive to what you need most.



We’ll be awarding prizes when the survey closes! To participate, scan the QR code to the left or go to:

[LITERACYTEXAS.ORG/NEEDS](https://literacytexas.org/needs)



**2024
ANNUAL SURVEY
OPEN NOW**

★ FEATURED PRESENTERS

In our last Annual Survey, we asked you to tell us the topics you most wanted to learn about. Among the top choices across the state were:

Using data for effective program evaluation
The needs of learners with low literacy

Integrating workplace skills into programs
Effective leadership

We invited special guest presenters to bring multiple sessions to you on the topics you chose.



JACQUELINE AGUILERA

SESSIONS:

Digital + Health + Literacy: A Prescription for Adult Ed & Career Pathways
Hard Skills Open the Door. Soft Skills Build the Future.



MAHALIA BALDINI

SESSIONS:

Opening Speaker: “The State of the State in Adult Education in 2024”
Adult Education: The New Frontier



VICKI CLARK

SESSIONS:

Inclusive Leadership: Unleashing the Power of All of Us
Navigating Change and Transformation: 21st-Century Board Governance



WENDY OGREN

SESSIONS:

Program Evaluation: A Key Component of Program Management (2-part session)
Now What? Applying Evaluation Results



HORACIO SANCHEZ

SESSIONS:

The Neuroscience of Reading
How Empathy Impacts Reading (2-part session)
The Crucial Role of Relationship Building in Reading Proficiency

**FIND BIOS FOR ALL
CONFERENCE
PRESENTERS:**



FRAN-VICTORIA STEPHENS

SESSIONS:

A Light Touch
Follow the Story-Squared Road:
How to Design a Concrete Campaign with a Clear Destination

SAN MARCOS RIVER A

Ways to Get Your Students Writing

Do your ELL students enjoy writing? Or does it take time and effort to get them to write? Writing can be intimidating for adult literacy students. This session will provide activities and creative ways to assist in getting your students to write.
Dr. Olga Escamilla | TX A&M University/TCALL

MAIN TOPIC
ADULT FOUNDATIONAL
EDUCATION
(HSE, ASE, ABE)

PD CATEGORY
LIT



SAN MARCOS RIVER B

From Blank Pages to Boundless Imagination:
Explore the Basics of Book Creator

Grab your laptops! Book Creator is a versatile digital tool with 100+ free accessibility tools for creating engaging multimodal books. Discover key features, navigation tips, and strategies for integrating Book Creator into adult education.
Ashly Winkle | TCALL

MAIN TOPIC
ADULT FOUNDATIONAL
EDUCATION
(HSE, ASE, ABE)

PD CATEGORY
LIT



HERE ON A SCHOLARSHIP?
THANK YOU TEXAS WORKFORCE COMMISSION FOR FUNDING
140+ SCHOLARSHIPS EVERY YEAR!



SPRING LAKE B

The Neuroscience of Reading

The neuroscience of reading results from a wealth of research on how the brain reaches reading proficiency. The research has developed the most effective teaching strategies to improve student outcomes.
Horacio Sanchez | Resiliency Inc.

MAIN TOPIC
INSTRUCTIONAL THEORY,
METHODOLOGY,
RESEARCH

PD CATEGORY
LIT



SPRING LAKE C

Literacy for All:
Structured Reading and Spelling (Part 1 of 2)

60% of readers need explicit reading instruction. Join Neuhaus Education Center Dyslexia Therapists and Reading Specialists to discuss evidence-based practices that are beneficial for all, and essential for our most vulnerable.
Lara Speights | Neuhaus Education Center
Catherine Hungerford Scott | Neuhaus Education Center

MAIN TOPIC
ADULT FOUNDATIONAL
EDUCATION
(HSE, ASE, ABE)

PD CATEGORY
LIT



VERAMENDI G

Navigating Change and Transformation:
21st-Century Board Governance

Change is inevitable. What can your organization do to be proactive in navigating change? In this session, we will review the board lifecycle and discuss ways that boards grow and evolve. Board-building needs also differ based on the board's stage of development.
Vicki Clark | Clark & Sanchez Consulting

MAIN TOPIC
STAFF & PROGRAM
MANAGEMENT FOR
NONPROFITS

PD CATEGORY
OTHER



VERAMENDI H

AI for Adult Literacy Education

This session breaks down AI, tackling its benefits and challenges in education, all while jazzing up lesson planning and boosting digital literacy skills for learners. With a nod to AI platforms for adult education, this session hypes up AI's knack for transforming your classroom.
Rina Renteria | TCALL

MAIN TOPIC
DIGITAL LITERACY
& TECHNOLOGY

PD CATEGORY
LIT



VERAMENDI I

Keeping Learners Motivated and Engaged

Research shows a direct correlation between the power of motivating learners and its impact on attention and memory. We will discuss how learning happens, what impacts learning, and building a learning climate that yields results.
Christina Miller | Aztec

MAIN TOPIC
INSTRUCTIONAL THEORY,
METHODOLOGY,
RESEARCH

PD CATEGORY
PAL



GET READY, TEXAS -
NEW-LOOK REGIONAL SYMPOSIA START IN SEPTEMBER!
LITERACYTEXAS.ORG/SYMPOSIA

VERAMENDI J

Successful Strategies and Supports
for Adults with Learning Disabilities

Join us as we review research-based proven instructional strategies and interventions to help students with learning disabilities to succeed in the classroom and beyond.
AnneMarie Molinari-Sanders | TCALL

MAIN TOPIC
LEARNING DIFFERENCES
& DISABILITIES

PD CATEGORY
LIT



SAN MARCOS RIVER A

Navigating the PD Portal: Essential Tips and Training Strategies for AEL Professionals

Come to a comprehensive exploration of TCALL’s PD Portal, emphasizing efficient utilization techniques. During this interactive session we’ll cover the basics of navigating the PD Portal effectively, along with insights into its features and commonly asked questions.

Jessica Beaty | TCALL

MAIN TOPIC
STAFF & PROGRAM
MANAGEMENT FOR
NONPROFITS

PD CATEGORY
OTHER

SESSION DETAILS



SAN MARCOS RIVER B

Hidden Gems: Unearthing Old Family Stories and Literacy

A fear of English in an immigrant child would morph into a reluctance to read in a teen. It would take years and a forgotten book in a public city bus before she’d discover the magic of books.

Alda Dobbs | Author

MAIN TOPIC
FAMILY &
PARENT LITERACY

PD CATEGORY
LIT

SESSION DETAILS



SPRING LAKE B

How Empathy Impacts Reading (Part 1 of 2)

The subconscious process that produces empathy also plays a significant role in reading proficiency and comprehension. Our ability to develop empathy causes a shift in the brain that must be achieved to obtain reading comprehension.

Horacio Sanchez | Resiliency Inc.

MAIN TOPIC
INSTRUCTIONAL THEORY,
METHODOLOGY,
RESEARCH

PD CATEGORY
LIT

SESSION DETAILS



SPRING LAKE C

Literacy for All: Structured Reading and Spelling (Part 2 of 2)

60% of readers need explicit reading instruction. Join Neuhaus Education Center Dyslexia Therapists and Reading Specialists to discuss evidence-based practices that are beneficial for all, and essential for our most vulnerable.

Lara Speights | Neuhaus Education Center
Catherine Hungerford Scott | Neuhaus Education Center

MAIN TOPIC
ADULT FOUNDATIONAL
EDUCATION
(HSE, ASE, ABE)

PD CATEGORY
LIT

SESSION DETAILS



VERAMENDI G

Adult Education: The New Frontier

The Workforce Innovation and Opportunity Act (WIOA) is up for reauthorization. Adult Education and Literacy continues to evolve. Come learn about recent updates and changes to policy and performance indicators that influence local service delivery statewide.

Mahalia Baldini | Texas Workforce Commission

MAIN TOPIC
ADVOCACY &
PUBLIC AWARENESS

PD CATEGORY
FIND ONLINE

SESSION DETAILS



VERAMENDI H

Fostering Inclusive Learning: Building Belonging in Group and 1-1 Classes

This workshop empowers educators to create inclusive classrooms for diverse learners. Through case studies and practical tools, discover how to foster a sense of belonging and create a positive learning environment where all feel valued and connected.

Karin Bates | Intercambio Uniting Communities

MAIN TOPIC
ENGLISH LANGUAGE
LEARNING
(ESL, ESOL, ELL)

PD CATEGORY
OTHER

SESSION DETAILS



VERAMENDI I

Keep ‘Em Coming Back! Retention Strategies for Growth and Success

The struggle is real! Student retention is one of the most critical challenges in adult education. When attendance is down, student progress slows, and educator frustration grows.

Charlie Weeks | Essential Education

MAIN TOPIC
INSTRUCTIONAL THEORY,
METHODOLOGY,
RESEARCH

PD CATEGORY
PAL

SESSION DETAILS



VERAMENDI J

Aging Texas Well – Aligning Health Literacy with Resource Awareness for Older Adults in Texas

The Texas Health and Human Services, Aging Service Coordination office promotes aging and living well through the Aging Texas Well initiative and the statewide Age Well Live Well campaign.

Camden Frost | TX Health & Human Services, Office of Aging Service Coordination

MAIN TOPIC
HEALTH
LITERACY

PD CATEGORY
OTHER

SESSION DETAILS



LUNCH IS STARTING SOON - DID YOU ORDER A SPECIAL MEAL?
MAKE SURE TO TALK TO CATERING STAFF BEFORE YOU JOIN THE BUFFET LINE!



BREAKOUT 3

TUESDAY, JULY 30 ★ 1:45 PM - 3:00 PM ★ 75 MIN

VERAMENDI G + H

Inclusive Leadership: Unleashing The Power of All of Us

Leaders need to adapt to fast-changing, complex, and unpredictable environments - which necessitates a different kind of leadership. Join us for this thought-provoking session on Inclusive Leadership.

Vicki Clark | Clark & Sanchez Consulting

VERAMENDI I + J

A Light Touch

Let's talk about the transformative light of family! What can truly happen when families have the coveted space to illuminate the wonder of literacy together. And how does this light offer a vision for children's future of freedom?

Fran-Victoria Stephens | Story Square

SPRING LAKE B

How Empathy Impacts Reading (Part 2 of 2)

The subconscious process that produces empathy also plays a significant role in reading proficiency and comprehension. Our ability to develop empathy causes a shift in the brain that must be achieved to obtain reading comprehension.

Horacio Sanchez | Resiliency Inc.

LEARNING EXCELLENT THINGS?

WHY NOT JOIN OUR FACEBOOK GROUP TO DISCUSS WITH PEERS?

FACEBOOK.COM/GROUPS/TEXASLITERACYNETWORK



SPRING LAKE C

Digital + Health + Literacy:

A Prescription for Adult Ed & Career Pathways

Digital healthcare is no longer "science fiction" or an option for the privileged few. Adult learners need adult literacy experiences that mimic the evolving med tech world, combining traditional health literacy with innovative digital health experiences.

Jacqueline Aguilera | Mayor's Office for Adult Literacy - Houston

MAIN TOPIC

DIVERSITY, EQUITY, & INCLUSION

PD CATEGORY

OTHER

SESSION DETAILS



MAIN TOPIC

FAMILY & PARENT LITERACY

PD CATEGORY

FIND ONLINE

SESSION DETAILS



MAIN TOPIC

INSTRUCTIONAL THEORY, METHODOLOGY, RESEARCH

PD CATEGORY

LIT

SESSION DETAILS



MAIN TOPIC

HEALTH LITERACY

PD CATEGORY

OTHER

SESSION DETAILS



TRAIN PD @ TCALL

Your Statewide AEL

Professional Development Center

Visit the TCALL Booth to see the PD Portal In Action!



- Support for local PD efforts
- Management of the PD Portal
- Support for state-wide events
- Extended PD Opportunities
- Communication tools
- Content and Trainer Development
- Research and Evaluation

JOIN THE PD PORTAL:

Search for on-demand online courses

Register for live PD opportunities

Join and post in Connect Communities

View your PD transcript



Texas Center for the Advancement

of Literacy & Learning

EDUCATION & HUMAN DEVELOPMENT



SAN MARCOS RIVER A

Engaging Families Through Meaningful & Critical Conversations: Utilizing Storytelling to Explore Their Funds of Knowledge

Join us for an enlightening session where we delve into the transformative power of storytelling in engaging families within the educational realm, through a case study of the Family and Community University at Aldine ISD.

Iván Tamayo | Aldine ISD

MAIN TOPIC
FAMILY & PARENT LITERACY

PD CATEGORY
OTHER

SESSION DETAILS



DON'T FORGET -
EVALUATE EACH SESSION YOU ATTEND IN OUR CONFERENCE APP!
LITERACYTEXAS.ORG/APP



SAN MARCOS RIVER B

Ventures, ELPS and CASAS STEPS - We've Got You Covered

The new CASAS STEPS is a big change in Adult Education because it's based on the English Proficiency Standards. But while STEPS is new, the English Proficiency Standards have been around for years...

Robin Graybill | Cambridge University Press

MAIN TOPIC
ENGLISH LANGUAGE LEARNING (ESL, ESOL, ELL)

PD CATEGORY
OTHER

SESSION DETAILS



SPRING LAKE B

The Crucial Role of Relationship-Building in Reading Proficiency

Neuroscience reveals that relationships are not just a social construct, but a vital component of brain development. For educators, understanding the impact of relationship-building on learning and brain performance is essential.

Horacio Sanchez | Resiliency, Inc.

MAIN TOPIC
INSTRUCTIONAL THEORY, METHODOLOGY, RESEARCH

PD CATEGORY
LIT

SESSION DETAILS



SPRING LAKE C

Beyond Literacy: Transformative Learning

Adults have an advantage of prior knowledge, but sometimes that knowledge can get in the way of learning new things. Let's look at how we can create an environment for Transformative Learning, which means questioning what we know to problem-solve and communicate more effectively.

Dr. Glenda Rose | Community Action, Inc. of Central Texas

MAIN TOPIC
ADULT FOUNDATIONAL EDUCATION (HSE, ASE, ABE)

PD CATEGORY
PAL

SESSION DETAILS



VERAMENDI G

Leveraging State Digital Opportunity Programs to Expand Digital Literacy

Learn about the Texas Digital Opportunity Plan and how the Texas Broadband Development Office plans to use federal funding to address barriers to the digital divide with particular focus on digital literacy.

Priyanka Kulkarni | Texas Broadband Development Office
Lauren Weber | Texas Broadband Development Office

MAIN TOPIC
DIGITAL LITERACY & TECHNOLOGY

PD CATEGORY
OTHER

SESSION DETAILS



VERAMENDI H

Using Partnerships to Overcome Barriers

Real adult educators across the state of Texas have been sharing barriers that their learners face to achieving their learning goals. Come learn how AEL programs in Texas are bridging across organizations to overcome student barriers to learning.

Megan Webb | TCALL

MAIN TOPIC
ADULT FOUNDATIONAL EDUCATION (HSE, ASE, ABE)

PD CATEGORY
OTHER

SESSION DETAILS



VERAMENDI I

Workforce Activities for Students Over 50

Many of our students come to us at a later age when their children are out of the house, and they find it is time to continue their learning. For all who come to adult education, we strive to incorporate workforce activities in our instruction to prepare our students for work.

Dr. Olga Escamilla | TX A&M University/TCALL

MAIN TOPIC
WORK READINESS, LITERACY FOR WORK

PD CATEGORY
OTHER

SESSION DETAILS



VERAMENDI J

Enhance Your Students' Learning Experience with Ellii

Discover Ellii's dynamic content platform, boosting student engagement and learning outcomes. Explore features streamlining teacher prep, empowering students, and aiding ESL and literacy instruction.

Laura Jacob | Ellii/Austin Community College

MAIN TOPIC
ENGLISH LANGUAGE LEARNING (ESL, ESOL, ELL)

PD CATEGORY
LIT

SESSION DETAILS



Visit an exhibitor at their table in the Exhibitor Hall for a lightning-fast (well, around 6-minute) presentation on the latest and greatest about their product or service – and then listen for the signal to move to your next choice.

TUESDAY 4:20 PM - 4:50 PM ★ 30 MIN

But choose wisely! You only get to visit 3 exhibitors and then we're done. Every Lightning Round you take part in gets you one chance to win door prizes.

CONVERSATION ★ REFRESHMENTS ★ PRIZES

★ BE SURE TO VISIT ALL OUR 2024 EXHIBITORS

Are You Ready, Inc.
Aztec Software
BurlingtonEnglish
Cambridge
CommonTeri Services
Data Recognition Corporation
EdReady
Ellii
Essential Education
GED Testing Service
Intercambio Uniting Communities
Literacy ConneXus
Mayor's Office for Adult Literacy
My Readologist
National Geographic Learning
New Readers Press
Pearson
Stella Stella
TALAE
TCALL



★ JOIN THIS YEAR'S EXHIBITORS FOR
VENDOR LIGHTNING ROUNDS ON TUESDAY -
YOUR CHANCE TO WIN PRIZES!

MORE INFO ON PAGE 13.

THANKS THANKS THANKS TO 2024 CONFERENCE SPONSORS! ★

Conference Presenting Sponsors



Bronze Sponsors



Other Sponsors

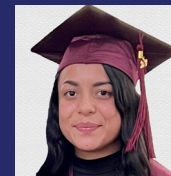


Annual Awards 2024

CONGRATULATIONS!



Maria Magdalena Gwartney
Student Achievement, ESOL
Community Action, Inc. of Central Texas



Jacqueline Turrubiarres
Student Achievement, ABE/HSE
Ysleta Community Learning Center



John Barton
Volunteer Instructor Excellence
Memorial Assistance Ministries



Barbara Noel
Volunteer Excellence
Neuhaus Education Center



Joan Grigsby
Lifetime Achievement
Literacy ConneXus





*Empower your
volunteers & instructors
to reach their
full potential...*

Scan Here for
Program Details!



**Training that teaches
people how to teach.**

FREE ONLINE TRAINING!*

The program is flexible, interactive, and evidence-based:

- Led and facilitated by master trainers
- 24/7 access during and after completion
- Provides instructional strategies
- Video demonstrations with real tutors/instructors and students

Get Started Today!
www.literacytexas.org/i2o



"I2O saved our program a lot of time and money. I no longer have to hire and train trainers, find a site, and deal with no-shows. I2O made our tutor training inexpensive, easy, and efficient, I couldn't have asked for more."
Ana, Program Manager Adult Literacy Program

* Available at no charge to Non-AEL funded programs.



**Exceptional content and courseware
for English language teachers**



Your students deserve timely and relevant materials. Try Ellii.com today!

EXTRA-SPECIAL THANKS TO:

2024 CONFERENCE COMMITTEE

Jacqueline Aguilera
Paula Bauer
Susan Howard
Sarah Mackay
Karim Ruiz
Lara Speights
Iván Tamayo
Katie Welch



LITERACY TEXAS BOARD

Ernest Lewis III | President
Alba Austin | Vice President
Gina Franke | Secretary
Dr. Kelly Coke
Kay Carroll
Magda Salazar
Leticia Spillane
Fran-Victoria Stephens
Dr. Kevin Thompson
Wes Young

SAN MARCOS RIVER A

Digital Literacy Content Standards

This interactive session unpacks the standards’ structure and importance, then empowers you to craft mini-lessons integrating them into your curriculum.

Crystal Tetrault | TCALL

MAIN TOPIC
DIGITAL LITERACY
& TECHNOLOGY

SESSION DETAILS



PD CATEGORY
LIT

SAN MARCOS RIVER B

Upskilling Adult Learners:
Leverage Video Lessons for Success

Join us for an engaging session where we’ll explore a dynamic online resource. We’ll dive into a vast library of video lessons covering topics like ESL, workforce readiness, technology, reasoning, language arts, and math.

Ashly Winkle | TCALL

MAIN TOPIC
ENGLISH LANGUAGE
LEARNING
(ESL, ESOL, ELL)

SESSION DETAILS



PD CATEGORY
LIT



ARE YOU ON OUR MAILING LIST?
SIGN UP HERE: [LITERACYTEXAS.ORG/NEWSLETTER](https://literacytexas.org/newsletter)

SPRING LAKE B

Program Evaluation:
A Key Component of Program Management (Part 1 of 2)

Program evaluation is a systematic, data-driven review of a program within an organization designed to answer questions about program effectiveness and efficiency, ensure program activities are connected to the organization’s strategic goals, and provide information that helps increase an organization’s ability to fulfill its mission.

Wendy Ogren | The Center for Nonprofit Management

MAIN TOPIC
PROGRAM EVALUATION &
DATA MANAGEMENT

SESSION DETAILS



PD CATEGORY
OTHER

SPRING LAKE C

Hard Skills Open the Door. Soft Skills Build The Future.

In today’s dynamic work landscape, the interplay between hard skills and soft skills is pivotal for professional success. While hard skills provide the technical foundation necessary for specific roles, soft skills are the invisible threads that weave together effective collaboration, adaptability, and personal growth.

Jacqueline Aguilera | Mayor’s Office for Adult Literacy - Houston

MAIN TOPIC
WORK READINESS,
LITERACY FOR WORK

SESSION DETAILS



PD CATEGORY
OTHER

VERAMENDI G

Science, Social Studies, and Math:
Cross-Curricular Strategies

High school equivalency tests cover several content areas and instructors rarely have time to teach all areas in a meaningful way. We need to be creative in how we teach language arts, math, social studies, and science.

Krista Mosher | TCALL

MAIN TOPIC
MATH, NUMERACY,
FINANCIAL LITERACY

SESSION DETAILS



PD CATEGORY
LIT

VERAMENDI H

Goal Setting: Beyond SMART

SMART goals are one way of setting objectives that are clear, realistic, and achievable within a certain timeframe. But setting a SMART goal may not be enough to ensure success – you also need strategies to help you achieve your goal.

Wayne Crandall | TCALL

MAIN TOPIC
INSTRUCTIONAL THEORY,
METHODOLOGY,
RESEARCH

SESSION DETAILS



PD CATEGORY
OTHER

VERAMENDI I

Reading to Learn:
Using Strategies for Teaching the Pre-HSE Learner

We have all had learners who struggle with reading, those who miss the GED or HiSET by only a few points or don’t understand what they are reading. This session will provide strategies and handouts to teach struggling readers.

Christina Miller | Aztec

MAIN TOPIC
ADULT FOUNDATIONAL
EDUCATION
(HSE, ASE, ABE)

SESSION DETAILS



PD CATEGORY
LIT



DON’T FORGET -
SPECIAL DOOR PRIZES DRAWN AT THE END OF TODAY!
MUST BE PRESENT TO WIN - SEE YOU IN SPRING LAKE C AFTER SESSION 8

VERAMENDI J

Differentiation Makes a Difference:
Supporting Students at All Stages

“Teacher, this is too easy.” “Teacher, this is too hard.” What do you do when you have one class (in-person and/or online), one curriculum, and many students at different English proficiency levels?

Martin Loa | BurlingtonEnglish
Taynim Johnson | BurlingtonEnglish

MAIN TOPIC
ENGLISH LANGUAGE
LEARNING
(ESL, ESOL, ELL)

SESSION DETAILS



PD CATEGORY
LIT

SAN MARCOS RIVER A

360 Degree Instruction - Trauma-Informed Instruction that Creates Healthy Graduates and Productive Citizens
Our students come to class with past and present trauma that is affecting their ability to learn and their success after they receive their GED. This breakout provides research-based best practices that every instructor can apply to become more effective in educating the whole student and producing flourishing citizens.
Kathy Young | OIC-OKC

MAIN TOPIC
INSTRUCTIONAL THEORY,
METHODOLOGY,
RESEARCH

PD CATEGORY
PAL

SESSION DETAILS

SAN MARCOS RIVER B

Digital Literacy and Beyond
We probably all agree that digital literacy is important, but how do we include it in our beginning ESL classrooms? Let's get hands-on about how to integrate these important skills in our lessons for adult learners.
Dr. Glenda Rose | Community Action, Inc. of Central Texas

MAIN TOPIC
DIGITAL LITERACY
& TECHNOLOGY

PD CATEGORY
LIT

SESSION DETAILS

SPRING LAKE B

Program Evaluation: A Key Component of Program Management (Part 2 of 2)
Program evaluation is a systematic, data-driven review of a program within an organization designed to answer questions about program effectiveness and efficiency, ensure program activities are connected to the organization's strategic goals, and provide information that helps increase an organization's ability to fulfill its mission.
Wendy Ogren | The Center for Nonprofit Management

MAIN TOPIC
PROGRAM EVALUATION &
DATA MANAGEMENT

PD CATEGORY
OTHER

SESSION DETAILS

SPRING LAKE C

Bouncing Back: Creating a Culture of Resilience in ESL Programs
Resilience is often defined as the ability to "bounce back" from challenges. How "bouncy" are your ESL students? Learn how to foster an environment where everyone—both teachers and students—feels empowered to persist in the face of stress and adversity.
Katie Welch | Welch Education

MAIN TOPIC
ENGLISH LANGUAGE
LEARNING
(ESL, ESOL, ELL)

PD CATEGORY
OTHER

SESSION DETAILS

VERAMENDI G

Goal Setting Within Family Literacy Programs to Promote Retention
Learn about the 4-component model of Family Literacy with specific focus on the role of goal setting for adults and families. The presentation will highlight how goal setting is integrated into all areas of the family literacy model and aids in learner retention.
Leesa Kraeger | National Center for Families Learning (NCFL)

MAIN TOPIC
FAMILY &
PARENT LITERACY

PD CATEGORY
PAL

SESSION DETAILS

VERAMENDI H

Improving Accessibility and Creating Community with Volunteer ESOL Teachers
Do you want to maximize your ESOL program's access and impact on a limited budget? Volunteers can serve not only as teachers who increase access for students inside the classroom but also as ambassadors within the community.
Karin Bates | Intercambio Uniting Communities

MAIN TOPIC
ENGLISH LANGUAGE
LEARNING
(ESL, ESOL, ELL)

PD CATEGORY
OTHER

SESSION DETAILS

VERAMENDI I

ESL for Professionals: A Model for Teaching ITP
Wondering where to start when serving your ITPs? This session will discuss the model used by Community Action, Inc. of Central Texas to develop an online class called ESL for Professionals that serves ITPs in 9 different counties.
Angi Mudd | Community Action, Inc. of Central Texas
Cynthia Arocha | Community Action, Inc. of Central Texas

MAIN TOPIC
ENGLISH LANGUAGE
LEARNING
(ESL, ESOL, ELL)

PD CATEGORY
OTHER

SESSION DETAILS

VERAMENDI J

Building Career and Academic Success for Your Students
Help your ABE students transition toward a career while improving their academic skills. This presentation will be interactive, and participants will come away with resources to use in the classroom.
Ann Beeson, M.Ed. | New Readers Press

MAIN TOPIC
WORK READINESS,
LITERACY FOR WORK

PD CATEGORY
OTHER

SESSION DETAILS

LUNCH IS STARTING SOON - DID YOU ORDER A SPECIAL MEAL?
MAKE SURE TO TALK TO CATERING STAFF BEFORE YOU JOIN THE BUFFET LINE!



SAN MARCOS RIVER A

Learn About the New TABE 13 & 14 and CLAS-E Tests!

This session will provide updates on the changes to the tests including test length, objectives, and reporting.

Chasity Wright | Data Recognition Corporation

SAN MARCOS RIVER B

Creating Culture: The Cornerstone for Recruitment, Retention, and Completion

From intake to graduation, we will examine best practices for developing an environment rooted in student success. Small, intentional efforts in creating culture can mean big returns in student recruitment, retention, and completion rates for your programs.

Dr. Jenny McCormack Walker | Literacy Texas

SPRING LAKE B

Follow the Story Squared Road: How to Design a Concrete Campaign with a Clear Destination

A well paved campaign that bridges your mission and target market can make the difference for your organization. What message has your organization been looking to sing from the mountaintops? Let's ROADMAP it – Story Square style!

Fran-Victoria Stephens | Story Square

MAIN TOPIC
ADULT FOUNDATIONAL
EDUCATION
(HSE, ASE, ABE)

PD CATEGORY
OTHER

SESSION DETAILS



MAIN TOPIC
INSTRUCTIONAL THEORY,
METHODOLOGY,
RESEARCH

PD CATEGORY
FIND ONLINE

SESSION DETAILS



MAIN TOPIC
MARKETING &
COMMUNICATIONS

PD CATEGORY
FIND ONLINE

SESSION DETAILS



MAIN TOPIC
FAMILY &
PARENT LITERACY

PD CATEGORY
OTHER

SESSION DETAILS



VERAMENDI G

Learn at the Library: 10 Years Growing a Digital Literacy Program in the Public Library

We traded in our “Quiet” signs for “Learning in Progress”: Explore how an adult education initiative got its start within the public library and continues to adapt and scale. Consider your program’s pain points and make a plan to bolster support.

Michelle Rickman | San Antonio Public Library

VERAMENDI H

Incorporating Relevant Content & Skills with Interactive Literacy Approaches

Actively engaging in literacy practices allows students to reach beyond barriers to access knowledge. Active learning experiences that include relevant texts and interactive literacy approaches motivate learners to progress in content knowledge and skills.

Lisa Polk | Sam Houston State University

VERAMENDI I

Program Self-Evaluation: When Did You Last Do This?

Based on a model developed by ProLiteracy, the presentation will assist literacy program administration with building capacity and attracting donors, organizational management, improving student services, and enhancing tutor/instructor value.

Lester Meriwether | Literacy ConneXus

VERAMENDI J

Sounds of Success: Techniques for Boosting Motivation and Confidence Through Pronunciation

This interactive workshop will introduce a range of fun, applicable techniques and tools for practicing sound and stress with adult English language learners.

Karin Bates | Intercambio Uniting Communities

MAIN TOPIC
LIBRARY PROGRAMS &
LITERACY SERVICES

PD CATEGORY
OTHER

SESSION DETAILS



MAIN TOPIC
WORK READINESS,
LITERACY FOR WORK

PD CATEGORY
LIT

SESSION DETAILS



MAIN TOPIC
STAFF & PROGRAM
MANAGEMENT
FOR NONPROFITS

PD CATEGORY
OTHER

SESSION DETAILS



MAIN TOPIC
ENGLISH LANGUAGE
LEARNING
(ESL, ESOL, ELL)

PD CATEGORY
LIT

SESSION DETAILS



ARE YOU IN A NONPROFIT LEADERSHIP ROLE?
IT'S HARD OUT THERE! WE HAVE TRAINING JUST FOR YOU:
LITERACYTEXAS.ORG/LEADERS

SPRING LAKE C

Igniting Family Literacy: The B3 Program's Journey & Impact

Discover how the Books Beginning at Birth (B3) program is revolutionizing early literacy in Texas by providing books to over 20,000 under-resourced families in over 200 counties.

Emily Ball Cicchini, PhD | BookSpring

SAN MARCOS RIVER A

Leveling the Academic Field for Hispanics: Plaza Comunitaria!

More than 70% of Hispanic students seeking their HSE come with educational gaps that need to be filled. Plaza Comunitaria is an accredited Adult Basic Education Pre-GED program with proven efficacy to fill these gaps.

Rosa Maria Crocker | MAS-Plano ISD

MAIN TOPIC
ADULT FOUNDATIONAL
EDUCATION
(HSE, ASE, ABE)

PD CATEGORY
OTHER



DID YOU KNOW?
WE’LL BE BACK HERE AT THE EMBASSY
IN SAN MARCOS NEXT YEAR!



SAN MARCOS RIVER B

Creating Student Success with GED - Let’s Help Students Earn Their TXCHSE!

Can we talk? Let’s discuss how free GED resources and tools can help promote student success. We all want our students to succeed with the GED!

Jonna Forsyth | GED Testing Service

MAIN TOPIC
ADULT FOUNDATIONAL
EDUCATION
(HSE, ASE, ABE)

PD CATEGORY
OTHER



SPRING LAKE B

Now What? Applying Evaluation Results

You’ve collected the data, but what do you do with it? Don’t let it sit on a shelf! Join us to explore how to apply evaluation results to inform program improvement, create a call to action, and raise funds for your organization.

Wendy Ogren | The Center for Nonprofit Management

MAIN TOPIC
PROGRAM EVALUATION &
DATA MANAGEMENT

PD CATEGORY
OTHER



SPRING LAKE C

Bridging the AEL/GED to Certifications Gap with “Are You Ready for College”

This session invites you to expand your online educational tools beyond the norm to bridge students into the world of college certifications.

Candace Reese | Are You Ready, Inc.

MAIN TOPIC
DISTANCE &
VIRTUAL LEARNING

PD CATEGORY
OTHER



VERAMENDI G

Innovative Partnerships Between a Community-Based Organization and the Public University

In this session we put theory into practice, through discussion of the partnership between Texas State University’s M.A. program in Adult, Professional and Community Education, and Community Action, Inc. of Central Texas’ adult education program.

Clarena Larrotta | Texas State University
Angi Mudd | Community Action, Inc. of Central Texas

MAIN TOPIC
COMMUNITY
PARTNERSHIPS &
COLLABORATION

PD CATEGORY
OTHER



VERAMENDI H

A New Look at ESL Beginning Literacy

How much input can learners with little to no literacy in their own language handle without being overwhelmed? Learn a thoughtful approach to helping students hold fast to what they already know while developing skills more efficiently and successfully.

Janet Kay | National Geographic Learning

MAIN TOPIC
ENGLISH LANGUAGE
LEARNING
(ESL, ESOL, ELL)

PD CATEGORY
LIT



VERAMENDI I

Activities Focused on Community and Culture

Delve into activities designed to stimulate discussion in your ESL classroom and get students to purposefully learn about US culture and interact within the community.

Dr. Olga Escamilla | TX A&M University/TCALL

MAIN TOPIC
ENGLISH LANGUAGE
LEARNING
(ESL, ESOL, ELL)

PD CATEGORY
LIT



VERAMENDI J

Sharing the Stories of Adult Learners: A Bibliography

Sharing the stories of adult learners inspires tutors and students to do better. Stories help restore hope and self-esteem - there’s nothing more effective than putting a human face to the struggles of basic literacy in adults.

Yolanda Medina | Collin County Adult Literacy Council

MAIN TOPIC
ADULT FOUNDATIONAL
EDUCATION
(HSE, ASE, ABE)

PD CATEGORY
OTHER



QUICK! MAKE YOUR WAY TO SPRING LAKE C -
WE’RE DRAWING END-OF-CONFERENCE PRIZES
AS SOON AS BREAKOUT 8 IS FINISHED.

MUST BE PRESENT TO WIN!



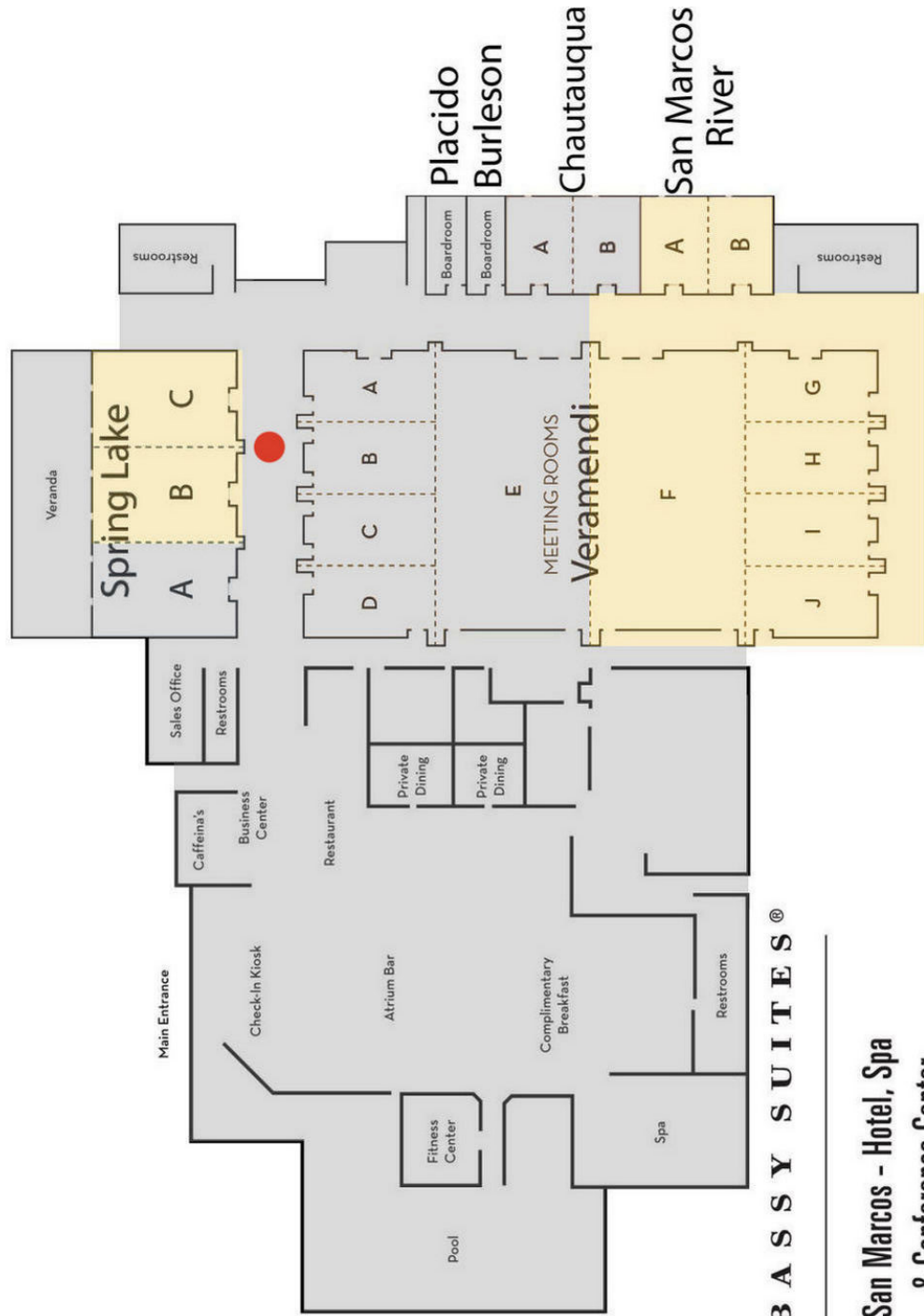
CONFERENCE SPACE HIGHLIGHTED IN YELLOW

EXHIBITOR HALL: Veramendi F

PLENARIES: Veramendi G - J

BREAKOUT SESSIONS: San Marcos River A, San Marcos River B, Spring Lake B, Spring Lake C, Veramendi G, Veramendi H, Veramendi I, Veramendi J

INFORMATION + LOST & FOUND: Conference check-in, outside Spring Lake ●



EMBASSY SUITES®

San Marcos - Hotel, Spa
& Conference Center

CONFERENCE WIFI NETWORK: Hilton Honors Meeting | PASSWORD: BEcares123
Huge thanks to conference wifi sponsor BurlingtonEnglish!