



# LITERACY TEXAS

## 2023 ANNUAL ★ CONFERENCE

August 1 & 2, College Station



#LITTX23

“LITERACY UNLEASHED”



# 2023 CONFERENCE SCHEDULE AT A GLANCE

## PRE-CONFERENCE: MONDAY, JULY 31, 2023

- 4:00 pm Hotel check-in opens  
Conference registration opens | Outside Restaurant
- 5:30 pm - 7:00 pm Conference VIP Reception | Exhibitor Areas (Bluebonnet Ballroom + Promenade)  
*Thank you to Essential Education, sponsor of the VIP Reception photobooth!*

## CONFERENCE DAY 1: TUESDAY, AUGUST 1, 2023

- 7:30 am Exhibitor areas open | Bluebonnet Ballroom, Promenade  
Conference check-in open | Outside Restaurant
- 8:00 am - 8:45 am **BREAKFAST & CONFERENCE OPENING SESSION** | Oakwood  
"State of the State in Adult Literacy" - **Mahalia Baldini**, Texas Workforce Commission
- 9:00 am - 10:30 am **Breakout 1** (90 min)
- 10:45am - 12:00 pm **Breakout 2** (75 min)
- 12:00 pm - 1:15 pm **LUNCH & KEYNOTE SPEAKER** | Oakwood  
"Centering Families in a Fast-changing Education and Workforce Landscape"  
- **Dr. Felicia C. Smith**, National Center for Families Learning (NCFL)
- 1:30 pm - 2:45 pm **Breakout 3** (75 min)
- 3:00 pm - 4:00 pm **Breakout 4** (60 min)
- 4:15 pm - 5:00 pm **Vendor Lightning Rounds** | Exhibitor Areas (Bluebonnet Ballroom + Promenade)
- 5:00 pm Distribution of "Dinner Dollars" | Bluebonnet Ballroom  
Dinner your own way

## CONFERENCE DAY 2: WEDNESDAY, AUGUST 2, 2023

- 7:00 am - 8:00 am Exhibitor areas open | Bluebonnet Ballroom + Promenade  
Breakfast your own way  
Check out and store bags
- 8:30 am - 10:00 am **Breakout 5** (90 min)
- 10:15 am - 11:30 am **Breakout 6** (75 min)
- 11:45 am - 12:45 pm **LUNCH & ANNUAL AWARDS** | Oakwood  
Annual Award presentations; **Student and Volunteer Speakers**
- 1:00 pm - 2:15 pm **Breakout 7** (75 min)
- 2:30 pm - 3:30 pm **Breakout 8** (60 min)
- 3:35 pm **Final prize drawing, farewell** | Bluebonnet 4

**THERE'S AN APP FOR THAT!**  
FIND THE 2023 LITERACY TEXAS  
CONFERENCE APP AT:  
[LITERACYTEXAS.ORG/APP](https://LITERACYTEXAS.ORG/APP)

# Dear friends of Literacy Texas:

Welcome to the 2023 annual conference, and **Literacy Unleashed!** I'm delighted to be back in College Station for a second year. Whether you're an annual conference veteran or a first-timer, I bid you a hearty **welcome**.

We have another full agenda for you this year, starting with the traditional "State of the State" address by Mahalia Baldini of the Texas Workforce Commission. I'm intrigued by the work of the National Center for Families Learning, which we'll hear about from Dr. Felicia C. Smith, and we have more than 50 breakout sessions for you over the two days of the conference. I know you'll find plenty of interest, but encourage you to pay particular attention to our special focuses this year - Literacy at the Lowest Levels, and Community Collaboration.

And most of all - **enjoy this time we have together.** Be inspired by your colleagues; gather new ideas and practical resources to take home with you. I hope you feel re-energized by these two days to continue our vital work.

Enjoy the conference!



Steve Banta  
Executive Director  
Literacy Texas

---

## FIND THE INFO YOU NEED

**BREAKOUT SESSIONS SCHEDULED FOR DAY 1 ARE ON PAGES 8 - 11**

**BREAKOUT SESSIONS SCHEDULED FOR DAY 2 ARE ON PAGES 20 - 23**

**AND THERE'S A LOT MORE INFO ONLINE, INCLUDING A DETAILED PAGE FOR EVERY SESSION  
START AT [LITERACYTEXAS.ORG/CONFERENCE](https://literacytexas.org/conference)**



# ...WELCOME BACK TO COLLEGE STATION!

## THINGS TO SEE & DO

- GEORGE H.W. BUSH PRESIDENTIAL LIBRARY AND MUSEUM
- CENTURY SQUARE
- MESSINA HOF WINERY & RESORT
- AGGIELAND SAFARI
- GRAND STATION: Bowling, laser tag, mini-golf, games
- BIG SHOTS GOLF: Mini-golf, virtual golf, fire pits, restaurants

THE HILTON OFFERS A FREE SHUTTLE SERVICE AROUND COLLEGE STATION - ASK AT RECEPTION



## GET YOUR "HEART OF AGGIELAND" PASS

This mobile-exclusive passport is a collection of curated attractions, retailers, restaurants and more, all offering deals and discounts to redeem during your visit to College Station.

Your passport will be instantly delivered to your phone via text and email and is ready to use immediately! There's no app to download. Your pass can be saved to your phone's home screen for easy one-tap access.

[LITERACYTEXAS.ORG/AGGIELANDPASS](http://LITERACYTEXAS.ORG/AGGIELANDPASS)

When visiting a participating business, simply present your phone to the attendant or staff member to redeem discounts.

## TUESDAY NIGHT DINNER IS ON VISIT COLLEGE STATION!

Thanks to Visit College Station tourist information center, Literacy Texas will once again be distributing "Dinner Dollars" - cash for you to take and spend on dinner, anywhere you choose. We hope you'll take the opportunity to discover some of the fabulous restaurants within a few blocks of the hotel - maybe with some of the new friends you made during the first day of the conference!

Find TCALL-recommended restaurants: [LITERACYTEXAS.ORG/MAP](http://LITERACYTEXAS.ORG/MAP)

Dinner Dollars will be distributed at the end of **Vendor Lightning Rounds** on Tuesday evening - see you there!





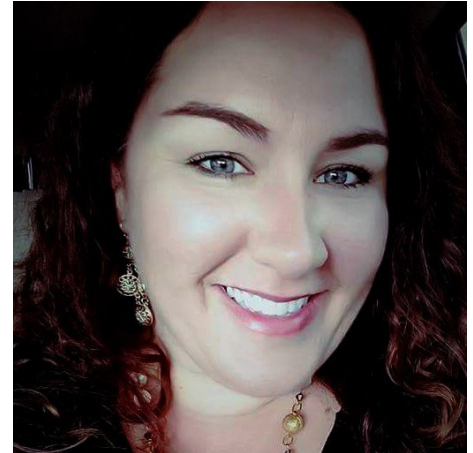
**CONFERENCE OPENING SESSION: TUESDAY, AUGUST 1, 8:00 AM - 8:45 AM**  
**MAHALIA BALDINI, TEXAS WORKFORCE COMMISSION**  
**“THE STATE OF THE STATE IN ADULT LITERACY”**

What’s going on in Adult Education and Literacy across Texas? What are the important recent trends in adult literacy, and what role do community-based organizations play in meeting the literacy challenges of the state?

Mahalia Baldini was named the Texas Workforce Commission (TWC) Adult Education and Literacy (AEL) State Director in September 2020 after serving as the program’s supervisor for over six years. She earned her B.A in Journalism from the University of Kentucky and her Master’s in Education from Texas State University.

Mrs. Baldini has spent the last fifteen years integrating workforce and economic development with educational solutions that center on outcomes for low and middle skill workers.

She believes in and values a system that supports equitable education and learning opportunities that focus on an individual’s academic preparedness and advancement as well as the social and emotional intelligence needed to contribute to a positive work culture aligned to employer needs.



★ **MORE FROM MAHALIA BALDINI -**  
**“IT TAKES A VILLAGE: HOW LITERACY**  
**PROGRAMS CAN PARTNER WITH WORKFORCE**  
**TO REACH AND TEACH MORE ADULT LEARNERS”**  
**TUESDAY, BREAKOUT 2**

**KEYNOTE: TUESDAY, AUGUST 1, 12:00 PM - 1:15 PM**  
**DR. FELICIA C. SMITH, NATIONAL CENTER FOR FAMILIES LEARNING (NCFL)**  
**“CENTERING FAMILIES IN A FAST-CHANGING EDUCATION AND WORKFORCE LANDSCAPE”**



★ **MORE FROM THE NCFL TEAM -**  
**“INCORPORATING VIRTUAL REALITY**  
**IN THE ADULT EDUCATION CLASSROOM”**  
**TUESDAY, BREAKOUT 4**

When we consider the state of rapidly changing technology alongside what we know is a pervasive need for bolstering adult literacy in the U.S., we all need to have an appetite for urgency. In the Organization of Economic Co-operation’s recently released report, Equity in Education, highlighting data collected in 2021, fewer than 10% of all adults had participated in formal and/or informal education training in the previous four weeks.

We need to open ourselves to collaboration and learning to marry the needs of struggling adults with the exponentially shifting reality of workforce demands.

A lifelong educator and national thought leader for teaching and learning, Dr. Felicia C. Smith brings decades of valuable experience to advance NCFL’s mission of working to eradicate poverty through education solutions for families. Having served in a variety of leadership roles in P-12, higher education, nonprofit, and philanthropy, her career has allowed her to experience leading systems and develop a unique vantage point of a learner’s educational trajectory from preschool to adulthood.

Smith holds an Ed.D. in education leadership and administration from the University of Kentucky, and an M.A. in elementary education with an emphasis on K-12 literacy development and B.S. in elementary education from the University of Louisville.

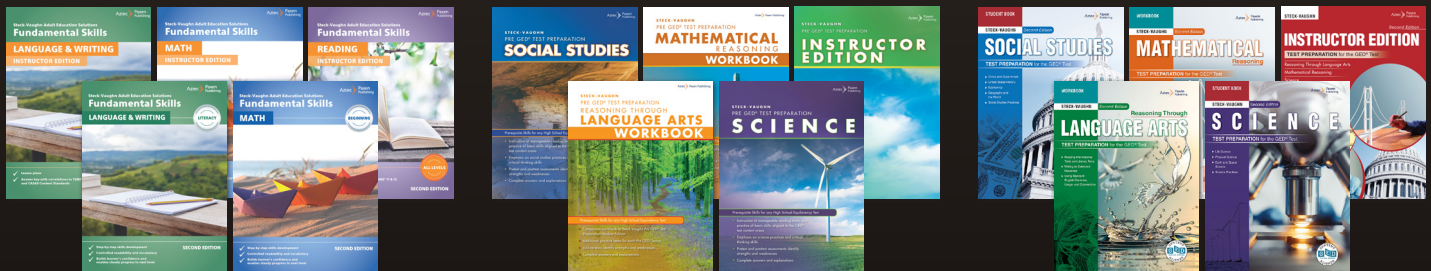


- **Adult Basic Education Solutions**  
(TABE®, CASAS®, Pre-HSE)
- **High School Equivalency Prep**  
(GED®, Spanish GED®, HiSET® Exam)
- **College Success**
- **Life Skills Education**
- **Workforce Development**
- **Career Technical Education**
- **Currículum en Español**  
Examen de GED®, Educación de Habilidades para la Vida

# A CURRICULUM FOR EVERY ADULT LEARNER

*Education to Occupation*

ADULT BASIC EDUCATION & HIGH SCHOOL EQUIVALENCY



**Steck-Vaughn  
Fundamental Skills**  
GRADE LEVEL 0.0–5.9

**Steck-Vaughn Pre GED®  
Test Preparation**  
GRADE LEVEL 6.0–8.9

**Steck-Vaughn 2<sup>ND</sup> Edition  
GED® Test Preparation**  
GRADE LEVEL 9.0–12.9

*Largest, Most Comprehensive Portfolio of Adult Learning Resources*

**AZTECSOFTWARE.COM | 800.273.0033**



# WHY “LITERACY UNLEASHED”?

During planning, members of the conference steering committee discussed the changes forced upon us all by the pandemic. One of the committee members remarked that it would be excellent if the literacy field could continue to build upon the innovation, flexibility, and “make it happen” spirit we all took on, during times when we had little choice.

**With this theme, we’ll be exploring what could truly be possible for Texas adults and families when literacy providers focus on innovation and creativity.**

## ★ SPECIAL GUEST PRESENTERS

In our 2022 Needs Assessment, we asked you to tell us the topics you most wanted to learn about. Two of the top choices across the state were:

**Teaching low-literate adults in ESOL and literacy classes**

**Forming and maintaining community partnerships**

**We invited special guest presenters to bring multiple sessions to you on the topics you chose.**



**ANDREA ECHELBERGER**  
LOW LITERACY SPECIALIST

**SESSIONS:**

Talk Amongst Yourselves: Building Up to Student-Facilitated Conversation  
Let’s Start at the Very Beginning: Instruction for Literacy Level Adult Learners  
This is Your Brain On Accents: Accent Bias and Discrimination in the U.S.  
The View From the Other Side of the Desk  
Developing Fluency & Vocabulary



**CRYSTAL PENNINGTON**  
COMMUNITY COLLABORATION SPECIALIST

**SESSIONS:**

Building this Plane as We Fly It: A Case Study in Collaboration in Amarillo, TX  
The Collaboration Spectrum: How to Enter into Community Partnerships While Maintaining Organizational Identity  
This is How We Do It: Panel Discussion on Community Collaboration



**KRISTINA RIVAS-JONES & DR. JENNY WALKER**  
COMMUNITY COLLABORATION SPECIALISTS

**SESSIONS:**

The Whole Village: How Wrap-Around Support Helped One Young Mother Get on Her Feet and Career Ready  
The Community Connection  
This is How We Do It: Panel Discussion on Community Collaboration

# Why CASAS?

**CASAS** is the premier student assessment and data management system for adult education in the United States. Our nonprofit organization was founded in 1980 **by adult educators for adult learners.**



## OUR ASSESSMENTS

- Are available in paper/pencil, online and remote formats
- Cost **LESS** than our competitors, and CASAS eTests **NEVER expire**
- Align with the College and Career Readiness (CCRS) and English Learner Proficiency (ELP) standards
- 100% WIOA compliant, covering **ALL NRS levels**



**New Reading and Listening Assessments for ESL available now!**



**Reading and Math Assessments for ABE/ASE also available!**



**TUESDAY 4:15 PM - 5:00 PM ★ 45 MIN**



**Join us in the exhibitor areas on Tuesday afternoon for Vendor Lightning Rounds and your chance to WIN!**

Visit a vendor at their table for a lightning-fast (well, around 7-minute) presentation on the latest and greatest about their product or service – and then listen for the signal to move to your next choice.

But choose wisely! You only get to visit 3 vendors and then we're done. Every Lightning Round you take part in gets you a chance to win door prizes.

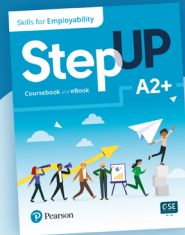
Refreshments will be provided along with a fun, relaxing time before we all head out to dinner.





# Meeting the challenges of today's Adult Education

[www.pearson.com/english](http://www.pearson.com/english)



## Step Up | Skills for Employability Beginning - Advanced

New!

Step Up is a flexible online course designed for adults who want to improve their employability skills - whether to get a first job, secure a promotion, find a different job, re-enter the workforce after an absence, or change fields. Although the emphasis of the course is on employability skills, Step Up also develops English language skills by providing vocabulary instruction and practice, listening, reading, and notetaking skills, pronunciation practice, and discussion strategies.

## Future | English for Work, Life, and Academic Success

Beginning - Low - Advanced

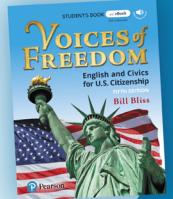
Building on the success of the first edition, Future continues to address the diverse needs of adult learners, equipping them with transferable academic, workplace, and English communication skills.



## Voices of Freedom | English and Civics for U.S. Citizenship

Beginning - Intermediate

Voices of Freedom has helped hundreds of thousands on their path to United States citizenship. This popular course provides students with the language skills and civics knowledge they need for success in their naturalization interview and citizenship test. The new edition now includes an eBook and app for practice on a mobile device.



Explore our 2023/24 Catalog



**Kenya Preuninger**  
Direct/Field Sales Representative, ELL, Texas  
[kenya.preuninger@pearson.com](mailto:kenya.preuninger@pearson.com)

## TALK AND NETWORK WITH PEERS ★ 75 MIN

A new kind of breakout session - **Group Chat IRL** (In Real Life). Get together in a small group and discuss current literacy trends – just like your favorite group chat on a messenger service, but face to face!

There are two Group Chat IRL breakout sessions in this year's program - one for literacy leaders, and the other for those who work with volunteers.

**Come join us for a facilitated conversation on literacy topics that matter.**

**GROUP CHAT IRL - DIRECTORS AND CEOs  
BREAKOUT 3**

**GROUP CHAT IRL - VOLUNTEER TRENDS  
BREAKOUT 6**



# GROUP CHAT IRL

DISCUSSION ★ IDEAS ★ NETWORKING

## BLUEBONNET 4

### Developing Fluency & Vocabulary

Discover methods for teaching vocabulary to beginning level English learners, and ideas for making it stick; explore ways to build speaking fluency and confidence, and activities for one-on-one or small group instruction.

Andrea Echelberger | LESLLA

ENGLISH LANGUAGE  
LEARNING (ESL,  
ESOL, ELL)

PD: LIT

## BLUEBONNET 5

### DART - Digital Access and Resilience in Texas

DART is a new curriculum for including digital skills and resilience into ESL classes. Designed primarily for learners with little or no English literacy, the curriculum can be adapted for learners at all levels.

Glenda Rose | Community Action, Inc. of Central Texas

ENGLISH LANGUAGE  
LEARNING (ESL,  
ESOL, ELL)

PD: LIT

## BLUEBONNET 6

### A Teacher's Dozen: Activities to Engage Your Learners

In-person, virtual, hy-flex... *donut* worry! No matter what your English language classroom looks like, *dunk* into our session to learn how to *spice* up your teaching and make any lesson more engaging.

Martin Loa, Ana Aparicio, Christina Robledo, Cathy Callejo | BurlingtonEnglish

ENGLISH LANGUAGE  
LEARNING (ESL,  
ESOL, ELL)

PD: LIT

## BLUEBONNET 7

### Building this Plane as We Fly It: A Case Study in Collaboration in Amarillo, Texas

Refugee Language Project lives at the crossroads of community collaboration and a unique organizational identity in its work with refugees in Amarillo, TX. Listen in on an evaluation of their largest collaboration to date in opening a multi-cultural community center.

Crystal Pennington | Refugee Language Project

COMMUNITY  
PARTNERSHIPS &  
COLLABORATION

PD: OTHER

## RESTAURANT

### Civics is Everywhere! Working Civics into Your ABE Classroom

This presentation is an innovative way of looking at incorporating civics into your ABE classroom. By infusing content areas, you'll learn to build lessons using your state or local content standards.

Ann Beeson, M.Ed. | New Readers Press

ADULT BASIC  
LITERACY  
(HSE, ASE, ABE)

PD: LIT

## MOCKINGBIRD A-B

### Part I: Structured Literacy - Reading Instruction for All

60% of readers need explicit instruction to learn to read. Join Lara, Licensed Dyslexia Therapist and Reading Specialist, to discuss researched reading practices that are beneficial for all, and essential for our most vulnerable. Part 2: Breakout 4.

Lara Speights | Neuhaus Education Center

ADULT BASIC  
LITERACY  
(HSE, ASE, ABE)

PD: LIT

## MOCKINGBIRD C-D

### Implementing PDSA (Plan, Do, Study, Act) Cycles for Reading Improvement

PDSA (Plan, Do, Study, Act) Cycles can be leveraged to push struggling readers forward. Learn how to empower adult students to use this simple yet practical tool to show improvement and reach their unique reading goals.

Brittany White | Ph.D. Student, Texas A&M

INSTRUCTIONAL  
THEORY,  
METHODOLOGY  
& RESEARCH

PD: LIT



## BLUEBONNET 4

### Talk Amongst Yourselves: Building Up to Student-Facilitated Conversation

A conversation is more than talking and listening! Learn about three essential skills learners need in order to join a conversation and keep it going. Come ready to participate and try out the techniques yourself!

Andrea Echelberger | LESLLA

ENGLISH LANGUAGE  
LEARNING (ESL,  
ESOL, ELL)

PD: LIT

## BLUEBONNET 5

### It Takes A Village: How Literacy Programs Can Partner with Workforce

Employers need a literate workforce. Literacy providers can play an important role as intentional co-creators of a literate and educated workforce.

Mahalia Baldini | Texas Workforce Commission

COMMUNITY  
PARTNERSHIPS &  
COLLABORATION

PD: OTHER

## BLUEBONNET 6

### Instructional Strategies for Family Literacy: A Teaching Approach for the AEL Practitioner

This session will provide attendees with Family Literacy resources that support intergenerational learning and development. We will discuss how to foster a love for family learning that will last a lifetime for students.

Paula Bauer, AnneMarie Molinari-Sanders | Texas Center for the Advancement of Literacy & Learning (TCALL)

PARENT &  
FAMILY LITERACY

PD: LIT

## BLUEBONNET 7

### Beyond the AEL Tradition: Where Do We Go From Here?

Explore the journey from offering traditional user tech applications to include evolving tech industries and opportunities, pushing digital equity and inclusion boundaries and upskilling & reskilling for the next tech generation.

Jacqueline Aguilera | Mayor's Office of Adult Literacy, Houston

DIGITAL  
LITERACY &  
TECHNOLOGY

PD: OTHER

## RESTAURANT

### 4 Myths and Truths About Adult English Language Learning

In this interactive workshop, we'll explore four common misconceptions about how adults learn language, highlighting the strengths of adult ELLs and how to best set learners up for success.

Karin Bates | Intercambio Uniting Communities

ENGLISH LANGUAGE  
LEARNING (ESL,  
ESOL, ELL)

PD: PAL

## MOCKINGBIRD A-B

### Financial Repercussions of Low Adult Literacy in the 21st Century

The World Literacy Foundation recently published their final report on the economic and social costs of low literacy. It provides us with a glimpse of the frightening consequences of our collective failure to address the problem.

Dr. Patricia Noske | Northeast ISD

ADVOCACY  
& PUBLIC  
AWARENESS

PD: OTHER

USE THE STAR RATING IN THE CONFERENCE APP TO TELL US WHAT YOU THOUGHT ABOUT EACH BREAKOUT

★  
GET MORE DETAILS  
ABOUT ALL THE  
BREAKOUT SESSIONS

GO TO [LITERACYTEXAS.ORG/BREAKOUTS](https://LITERACYTEXAS.ORG/BREAKOUTS)  
CHECK THE CONFERENCE APP  
OR SCAN THE CODE TO THE RIGHT



# BREAKOUT 3 ★ TUESDAY 1:30 PM - 2:45 PM ★ 75 MIN

## BLUEBONNET 4

### Pronunciation for Adult English Language Learners

This interactive workshop will introduce a range of fun, applicable techniques and tools for practicing sound and stress with adult English language learners.

Karin Bates | Intercambio Uniting Communities

ENGLISH LANGUAGE  
LEARNING (ESL,  
ESOL, ELL)

PD: LIT

## BLUEBONNET 5

### The Community Connection

Explore the way community collaboration has revolutionized the experience of adult learners in Texarkana through partnerships between non-profits, higher education institutions, government agencies, and faith-based organizations.

Dr. Jenny Walker | Literacy Council of Bowie & Miller Counties, Kristina Rivas-Jones, 100 Families

COMMUNITY  
PARTNERSHIPS &  
COLLABORATION

PD: OTHER

## BLUEBONNET 6

### Keep Calm and Math On!

Math, whether teaching or learning it, tends to cause strong emotions in people. Investigate causes of math anxiety based on research and personal experiences and explore some in-class practices to help combat it.

Krista Mosher | Texas Center for the Advancement of Literacy & Learning (TCALL)

MATH, NUMERACY,  
& FINANCIAL  
LITERACY

PD: LIT

## BLUEBONNET 7

### Fulfilling Your Learning Needs with the PD Portal

Join TCALL for tips on how to use the PD Portal. Learn to create an account; search for, request, and complete professional development; locate certificates of completion, and join and post in Connect Communities.

Laura Greer | Texas Center for the Advancement of Literacy & Learning (TCALL)

PROGRAM  
EVALUATION & DATA  
MANAGEMENT

PD: OTHER

## RESTAURANT

### Group Chat IRL - for Directors & CEOs

Group Chat IRL (In Real Life) sessions bring small groups together for guided conversation. This session is for anyone in leadership at their organization - gather for some real talk about the trials, tribulations, and joys of literacy leadership.

Literacy Texas Board Members: Ernest Lewis III | BakerRipley, Alba Austin | Permian Basin Adult Literacy Center

STAFF & PROGRAM  
MANAGEMENT FOR  
NONPROFITS

PD: OTHER

## MOCKINGBIRD A-B

### Discover Transferable Workforce Preparation Skills in Ventures

Discover transferable workforce preparation skills in these areas: communication, working with others, critical thinking, self-management, digital literacy and interview skills. You will take away practical lesson ideas.

Robin Graybill | Cambridge

ENGLISH LANGUAGE  
LEARNING (ESL,  
ESOL, ELL)

PD: OTHER

USE THE STAR RATING IN THE CONFERENCE APP TO TELL US WHAT YOU THOUGHT ABOUT EACH BREAKOUT



GO TO [LITERACYTEXAS.ORG/BREAKOUTS](https://LITERACYTEXAS.ORG/BREAKOUTS)  
CHECK THE CONFERENCE APP  
OR SCAN THE CODE TO THE LEFT

GET MORE DETAILS  
ABOUT ALL THE  
BREAKOUT SESSIONS ★

**BLUEBONNET 4****Incorporating Virtual Reality in the Adult Education Classroom**

Examine two pilot projects exploring how virtual reality can be incorporated into adult education. Gain awareness of tools and skills needed and the possibilities of this technology; learn how immersive education can promote the academic development of adult learners.

Dr. Felicia C. Smith, Patrica Erwin, Ph.D., Jason Souders | National Center for Families Learning (NCFL)

**INSTRUCTIONAL  
THEORY,  
METHODOLOGY  
& RESEARCH**

**PD: SEE WEBSITE**

**BLUEBONNET 5****Part II: Structured Literacy and Dyslexia with Adult Learners**

Across Texas, adults with undiagnosed dyslexia are struggling to read. Join for a conversation about dyslexia around the neuroscience, the red flags, and supporting these learners academically and emotionally. Part 1: Breakout 1.

Lara Speights | Neuhaus Education Center

**LEARNING  
DIFFERENCES &  
DISABILITIES**

**PD: LIT**

**BLUEBONNET 6****The Digital Divide in Rural and Latino Communities, and the Impact**

Learn about the digital divide in rural and Latino communities, factors associated with digital disparities, research conducted during the COVID-19 pandemic, and strategies to promote digital access and communication.

Rebecca Sanchez, Katherine Avila | Graduate Students, University of Houston

**DIGITAL  
LITERACY &  
TECHNOLOGY**

**PD: OTHER**

**BLUEBONNET 7****SLIFE: Students with Limited or Interrupted Formal Education**

Learn about the unique needs of SLIFE (Students with Limited or Interrupted Formal Education) and how to tailor your teaching for ESL students who do not have strong literacy skills in their home languages.

Katie Welch | Welch Education

**ENGLISH LANGUAGE  
LEARNING (ESL,  
ESOL, ELL)**

**PD: LIT**

**RESTAURANT****The View From the Other Side of the Desk**

Ever look at English learners and wish you had a better understanding of their classroom experience? This session will put you in the shoes of beginning language learners to gain a deeper understanding of the challenges ELLs face.

Andrea Echelberger | LESLLA

**ENGLISH LANGUAGE  
LEARNING (ESL,  
ESOL, ELL)**

**PD: PAL**

**MOCKINGBIRD A-B****Improve Reading Scores Using MindPlay Ultra: A Research-Based Program**

Essential Education has streamlined the delivery of reading instruction with MindPlay Ultra. It is the ONLY adult-appropriate reading program that includes a full reading level range along with a virtual speech pathologist.

Beth Williams | Essential Education

**ADULT BASIC  
LITERACY  
(HSE, ASE, ABE)**

**PD: OTHER**

**MOCKINGBIRD C-D****Improving Testing and NRS Gains of ESL Students with TABE CLAS-E Online**

TABE CLAS-E Online is the only assessment measuring reading, writing, listening, and speaking skills for adult ESL students in both a paper and computer-based format.

Chasity Wright | Data Recognition Corporation

**ENGLISH LANGUAGE  
LEARNING (ESL,  
ESOL, ELL)**

**PD: OTHER**



★ 25+ EXHIBITORS THIS YEAR - BE SURE TO VISIT THEM ALL

AdvanceNet Technology Services  
Aztec Software  
BurlingtonEnglish  
Cambridge  
CASAS  
Chamberlain University & Walden University  
CommonTeri Services  
Data Recognition Corporation  
ESL Imprinted  
Essential Education  
GED Testing Service  
Gemma Open Door for Literacy  
Intercambio Uniting Communities  
Kristi Clark Designs  
Literacy ConneXus  
LiteracyPro Systems, Inc.  
Mayor's Office for Adult Literacy, Houston  
National Geographic Learning  
New Readers Press  
Pearson  
Superior HealthPlan  
TCALL  
Teaching Multilingual, LLC  
Texas Health & Human Services  
Townsend Press  
Visit College Station



JOIN THIS YEAR'S EXHIBITORS FOR  
VENDOR LIGHTNING ROUNDS ON TUESDAY -  
YOUR CHANCE TO WIN PRIZES!

MORE INFO ON PAGE 6.

THANKS THANKS THANKS TO 2023 CONFERENCE SPONSORS! ★



# TRAIN PD @ TCALL

## Your Statewide AEL Professional Development Center



- **Support** for local PD efforts
- **Management** of the PD Portal
- Support for **state-wide events**
- Extended PD **Opportunities**
- Communication **tools**
- Content and Trainer **Development**
- **Research** and **Evaluation**

## JOIN THE PD PORTAL:

**Search** for on-demand online courses

**Register** for live PD opportunities

**Join and post** in Connect Communities

**View** your PD transcript



Texas Center for the Advancement  
of Literacy & Learning  
EDUCATION & HUMAN DEVELOPMENT



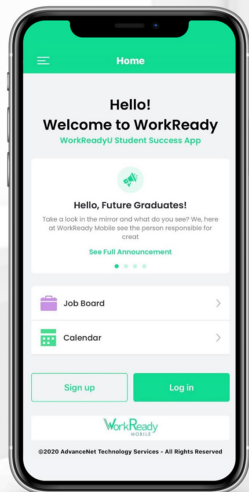


## Registering, Retaining and Measuring Gains of Adult Students?

There's an App for that!

# WorkReady

MOBILE



Register  
Retain  
Measure  
Achieve

Special thanks to:



**A Texas-Based, Tech-for-Good Organization**  
**Come see us at the conference to win a prize!**

I2O in Texas is sponsored by TCALL



**INTAKE TO OUTCOMES (I2O)**  
Online Training for Adult Literacy

## ONLINE TRAINING FOR NEW INSTRUCTORS:

Reading Basics  
Language Basics  
Math Basics

The Citizenship Coach  
Employability Soft Skills

**FREE**  
**FOR TX LITERACY**  
**NONPROFITS!**

# ARE YOU ON OUR MAILING LIST?



**LITERACYTEXAS.ORG/  
NEWSLETTER**



# TELL US WHAT YOU NEED!

At Literacy Texas, we don't ever want to work in a vacuum. And we always want the support we provide to be relevant.

So every year, we conduct a Needs Assessment - an online survey where we ask the literacy folks of Texas to tell us what we should focus on in the coming year.

We use the results of the Needs Assessment throughout the year - your responses influence regional symposia, online training, and this conference.



**2023-24 NEEDS ASSESSMENT OPEN NOW**



Complete the Needs Assessment while you're here in College Station and be in the running for a tablet!



And a tablet's not the only prize - get all the info on our website. Scan the QR code to the left or go to:

[LITERACYTEXAS.ORG/NEEDS](https://LITERACYTEXAS.ORG/NEEDS)

# THINK LITERACY TEXAS FOR ...ONLINE RESOURCES

Need a template for bylaws?

Looking for quality classroom ideas?

Starting a new literacy program and want to base it on a firm foundation?

Missed a symposium but thought the sessions sounded good?



# HEY!

CHECK OUT THESE RESOURCES!



[LITERACYTEXAS.ORG/RESOURCES](http://LITERACYTEXAS.ORG/RESOURCES)

Visit the Literacy Texas website and YouTube channel for quality resources on a **wi - i - i - i - de** range of topics!

[YOUTUBE.COM/@LITERACYTEXAS](http://YOUTUBE.COM/@LITERACYTEXAS)

## HERE ON A SCHOLARSHIP?



THANK YOU TEXAS WORKFORCE COMMISSION FOR FUNDING 125+ SCHOLARSHIPS EVERY YEAR!

### MINDPLAY READING ULTRA

NOW AVAILABLE WITH ESSENTIAL EDUCATION



MindPlay Reading Ultra improves reading skills fast by:

- ▶ Providing a virtual reading specialist and speech pathologist to deliver lessons.
- ▶ Tracking student progress and identifying where to focus reading practice to strengthen skills.
- ▶ Offering remediation and acceleration per each student's reading level.

Help your adult learners build reading skills in phonics, grammar, vocabulary, fluency, comprehension, and phonemic awareness.



Scan me to schedule a brief demo today!



## SPECIAL THANKS TO:

### LITERACY TEXAS BOARD

Ernest Lewis III | President  
Alba Austin | Vice President  
Mike Meyers | Treasurer  
Gina Franke | Secretary  
Carlos Carpizo  
James Garland  
Magda Salazar  
Kathy Schatz  
Leticia Spillane  
Fran-Victoria Stephens  
Dr. Kevin Thompson  
Wes Young

### FIND THESE LITERACY TEXAS BOARD MEMBERS LEADING BREAKOUT SESSIONS:

ERNEST LEWIS III  
ALBA AUSTIN

MAGDA SALAZAR  
LETICIA SPILLANE



## Phonetic Mat / Tapete Fonético

Is a research based classroom tested hands-on educational tool created to ensure student's reading readiness through singing, music, and body motions while learning new vocabulary and developing fine motor skills. This informal assessment tool develops and ensure student's mastery of:

- Phonemic awareness in English and Spanish
- Alphabet knowledge
- Letter formation and upper and lower case
- Fine motor skills
- Rhyming skills
- More than 300 words in both languages

**All In One Product!**

**ORDER NOW**  
and get 5 digital freebies!

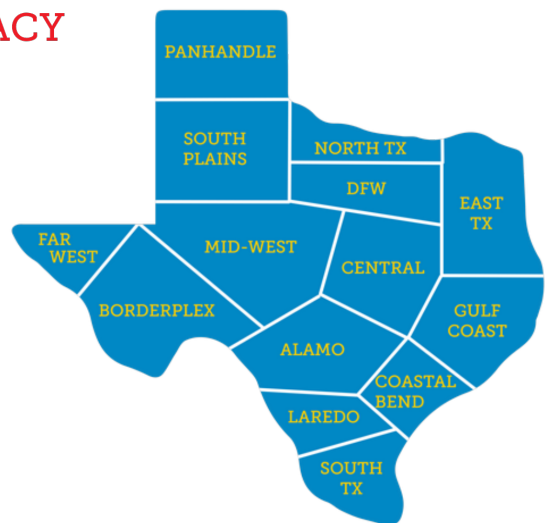
[www.teachingmultilingual.com](http://www.teachingmultilingual.com)



## TX LITERACY SYMPOSIA EXCELLENCE IN ADULT LITERACY



*find your region!*



## THINK LITERACY TEXAS FOR ...VOLUNTEER TRAINING

Literacy Texas partners with regional organizations to offer **free** professional development symposia throughout the year. Symposia are an excellent place to learn and network with other literacy providers in your region, and a great source of professional development.

[LITERACYTEXAS.ORG/SYMPOSIA](http://LITERACYTEXAS.ORG/SYMPOSIA)





Shared Strategies.  
Valued Relationships.  
Sustainable Solutions.

The most experienced adult literacy focused Salesforce consulting firm is a proud supporter of Literacy Texas since 2015.

Do you need:

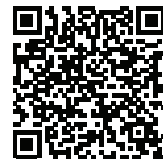
- WIOA reports?
- ProLiteracy reports?
- Outcomes management?
- PD credit management?

We have it covered at  
CommonTeri Services.

### NEW Constituent Portal

Are you ready for your intake forms to be online? Use our web portal for:

- registration
- events
- membership
- sign-up forms
- volunteer management and more!



LEARN MORE

## Managed Services for Nonprofits Using Salesforce Systems

Managing 6 essential technical needs with 3 types of plans:

- Guided DIY
- Strong Foundation
- Remote Admin



LEARN MORE

Let CommonTeri take care of your data so you can focus on your mission.



# Annual Awards

## 2023

CONGRATULATIONS!



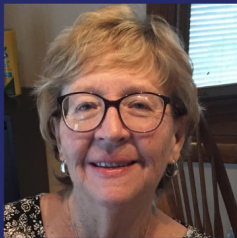
**Teresa Henriquez**  
Student Achievement, ESOL  
*BakerRipley*



**Logan Garza**  
Student Achievement, ABE/HSE  
*Literacy Council of Bowie & Miller Counties*



**Susan Velasquez**  
Volunteer Instructor Excellence  
*Families & Literacy, Inc.*



**Jackie Dean**  
Volunteer Excellence  
*Books Are Gems, Inc.*

# BREAKOUT 5 ★ WEDNESDAY 8:30 AM - 10:00 AM ★ 90 MIN

## BLUEBONNET 4

### Let's Start at the Very Beginning Part 1: Instruction for Literacy Level Adult Learners

Do you work with adult learners who are just beginning to read and write? This session will cover goals, processes, and activities for helping adult ESL and reading learners get successfully started on the road to literacy. Part 2: Breakout 6.

Andrea Echelberger | LESLLA

ENGLISH LANGUAGE  
LEARNING &  
ADULT BASIC  
LITERACY

PD: LIT

## BLUEBONNET 5

### The Whole Village: How Wrap-Around Support Helped One Young Mother Get on Her Feet and Career Ready

We know that when an adult learner is struggling with education, they usually struggle in many areas. This case study session will take a deep look at the impact of collaboration with community members to help a student to thrive.

Kristina Rivas-Jones | 100 Families, Dr. Jenny Walker | Literacy Council of Bowie & Miller Counties

COMMUNITY  
PARTNERSHIPS &  
COLLABORATION

PD: OTHER

## BLUEBONNET 6

### Maximizing Your Instruction: Innovative Strategies & Lesson Ideas

Now there are on-demand digital literacy curricula, what are you doing to ensure students practice? Explore ways to help students use digital literacy skills in a contextualized environment, using free curricula.

Ashly Winkle | Texas Center for the Advancement of Literacy & Learning (TCALL)

DIGITAL  
LITERACY &  
TECHNOLOGY

PD: LIT

## BLUEBONNET 7

### Soft Skills Are Anything But Soft

Getting the job opens the door, but keeping a job takes skill. Soft Skills are essential skills that pave the way towards success. This session explores the elements of what makes "Power Skills" valuable talent currency.

Jacqueline Aguilera | Mayor's Office of Adult Literacy, Houston

LITERACY FOR  
WORK, WORK  
READINESS

PD: OTHER

## RESTAURANT

### Start in the Middle to Get to the Finish: Phonics Tricks for Strugglers

Many students read the first few letters of words and then guess the rest, reading Brad as Bard, girl as grill, and so on. Attendees will learn to help confused students pronounce the vowel FIRST, to successfully decode English.

Elizabeth Martinez | ESL Imprinted

ENGLISH LANGUAGE  
LEARNING &  
ADULT BASIC  
LITERACY

PD: LIT

## MOCKINGBIRD A-B

### Sparking Conversations About Race and Equity with English Learners

English learners with basic conversational skills are often eager to learn about racism, equity, and justice. This interactive workshop will provide teachers with tools to successfully introduce these topics in their classes.

Karin Bates | Intercambio Uniting Communities

DIVERSITY,  
EQUITY, &  
INCLUSION

PD: OTHER

USE THE STAR RATING IN THE CONFERENCE APP TO TELL US WHAT YOU THOUGHT ABOUT EACH BREAKOUT



GO TO [LITERACYTEXAS.ORG/BREAKOUTS](https://literacytexas.org/breakouts)  
CHECK THE CONFERENCE APP  
OR SCAN THE CODE TO THE LEFT

GET MORE DETAILS  
ABOUT ALL THE  
BREAKOUT SESSIONS ★



**BLUEBONNET 4**

**Let's Start at the Very Beginning Part 2: Instruction for Literacy Level Adult Learners**

Do you work with adult learners who are just beginning to read and write? This session will cover goals, processes, and activities for helping adult ESL and reading learners get successfully started on the road to literacy. Part 1: Breakout 5.  
Andrea Echelberger | LESLLA

**ENGLISH LANGUAGE  
LEARNING &  
ADULT BASIC  
LITERACY**  
**PD: LIT**

**BLUEBONNET 5**

**Delivering Job-Ready Candidates**

When workplace skills are integrated into the classroom, programs can better deliver job-ready candidates. When employers see that students have adequate workplace skills and qualifications, they'll be more willing to hire them.  
Olga Escamilla | Texas Center for the Advancement of Literacy & Learning (TCALL)

**LITERACY FOR  
WORK, WORK  
READINESS**  
**PD: OTHER**

**BLUEBONNET 6**

**The Power of Partnerships**

Partnerships can take many forms! In this session, learn about the creation and growth of the Alamo Workforce Consortium, and its innovative combining of community supports to provide wrap-around services in San Antonio.  
Caroline Goddard | Workforce Solutions

**COMMUNITY  
PARTNERSHIPS &  
COLLABORATION**  
**PD: OTHER**

**BLUEBONNET 7**

**Dive into Digital: Building Digital Confidence with BurlingtonEnglish**

In this session, we will explore how BurlingtonEnglish immerses students in a digital experience with standards-based, teacher-led instruction to develop English proficiency while integrating essential digital literacy skills.  
Martin Loa | BurlingtonEnglish

**DIGITAL  
LITERACY &  
TECHNOLOGY**  
**PD: OTHER**

**RESTAURANT**

**Group Chat IRL - Volunteer Trends**

Group Chat IRL (In Real Life) sessions bring small groups together for guided conversation. This session is for anyone who works with volunteers - gather and share tips, techniques, and observations about volunteerism in 2023.  
Literacy Texas Board Members: Leticia Spillane | Literacy Volunteers of Laredo, Magda Salazar | Hispanic Communicators DFW

**VOLUNTEER  
SUPPORT &  
MANAGEMENT**  
**PD: OTHER**

**MOCKINGBIRD A-B**

**Stand Out - The Fourth Edition**

See what's new with Stand Out - The Fourth Edition: NEW Spark Digital platform; NEW Workforce Lessons in every Unit; NEW Life Online Videos focus on Digital Literacy Strategies and Instruction; NEW Literacy Foundations Level.  
Staci Johnson (curriculum author), Janet Kay | National Geographic Learning

**ENGLISH LANGUAGE  
LEARNING (ESL,  
ESOL, ELL)**  
**PD: OTHER**

**MOCKINGBIRD C-D**

**Academic Pre-GED Gap for Spanish Speakers? Plaza Comunitaria!**

The Plaza Comunitaria is an academic bridge for Hispanic youngsters, adults, and families. An accredited Adult Basic Education pre-GED program available in the U.S., Plaza Comunitaria de Plano has been running successfully for 19 years.  
Rosa-Maria Crocker | Collin County Adult Literacy Council

**ADULT BASIC  
LITERACY  
(HSE, ASE, ABE)**  
**PD: OTHER**

# BREAKOUT 7 ★ WEDNESDAY 1:00 PM - 2:15 PM ★ 75 MIN

## BLUEBONNET 4

### This is Your Brain On Accents: Accent Bias and Discrimination in the United States

Learn about accent bias research and ways that accent bias can result in discrimination for non-native speakers of English. Roleplay ways to interrupt accent bias and advocate for English language learners in their communities.

Andrea Echelberger | LESLLA

DIVERSITY,  
EQUITY, &  
INCLUSION

PD: OTHER

## BLUEBONNET 5

### Lessons Learned from Adopting Reading Fluency Technology in the Classroom

Tracking data is important but oftentimes ends up collecting dust. Join us for a discussion on takeaways from an adult literacy program's integration of reading fluency technology created by a former student.

Lara Speights | Neuhaus Education Center

PROGRAM  
EVALUATION & DATA  
MANAGEMENT

PD: OTHER

## BLUEBONNET 6

### Is This Messy Writing or is it Dysgraphia?

Presenter will explain how this disability affects people's ability to write legibly and how it interferes with the ability to express written language. In addition, the presenter will share strategies to help correct writing.

Leticia Spillane | Literacy Volunteers of Laredo

INSTRUCTIONAL  
THEORY,  
METHODOLOGY  
& RESEARCH

PD: SEE WEBSITE

## BLUEBONNET 7

### Leveraging Data to Strategically Move Teams Forward

At the crux of making change happen is DATA - more specifically, the emotions tied to data. Unfortunately, a preoccupation with data itself can have negative side effects of decreased commitment and burnout.

Casey Watts | Impact Coach & Consultant

PROGRAM  
EVALUATION & DATA  
MANAGEMENT

PD: OTHER

## RESTAURANT

### The Collaboration Spectrum: How to Enter into Community Partnerships While Maintaining Organizational Identity

Collaboration, at its best, leverages the strengths and resources of multiple groups to accomplish shared goals. In this session, we will look at forming beneficial partnerships that don't sacrifice the core identity of your organization.

Crystal Pennington | Refugee Language Project

COMMUNITY  
PARTNERSHIPS &  
COLLABORATION

PD: OTHER

## MOCKINGBIRD A-B

### Family Math Literacy Initiative Call Center for Texans

Introducing: Family Math Literacy Initiative Call Center. Learn about this free one-to-one math instructional support resource for Texas adult learners and their family members.

May O'Brien, Jennifer Bell, Asmaa Benajar | Harris County Dept. of Education

MATH, NUMERACY,  
& FINANCIAL  
LITERACY

PD: OTHER

USE THE STAR RATING IN THE CONFERENCE APP TO TELL US WHAT YOU THOUGHT ABOUT EACH BREAKOUT



GO TO [LITERACYTEXAS.ORG/BREAKOUTS](https://LITERACYTEXAS.ORG/BREAKOUTS)  
CHECK THE CONFERENCE APP  
OR SCAN THE CODE TO THE LEFT

GET MORE DETAILS  
ABOUT ALL THE  
BREAKOUT SESSIONS ★

# BREAKOUT 8 ★ WEDNESDAY 2:30 PM - 3:30 PM ★ 60 MIN

## BLUEBONNET 4

### This is How We Do It: Panel Discussion on Community Collaboration

There's no one right way to do community collaboration - in fact, the more tailored to needs and context collaboration is, the more likely it is to be successful. Hear four panelists from different types of literacy programs across Texas discuss what works.

Panelists: Caroline Goddard, Crystal Pennington, Kristina Rivas-Jones, Dr. Jenny Walker

COMMUNITY  
PARTNERSHIPS &  
COLLABORATION

PD: OTHER

## BLUEBONNET 5

### Easy Books for Improved Adult Learner Reading Fluency & Comprehension

This session will focus on the important fluency-comprehension relationship. Some simple, easy-to-use methodologies will be demonstrated using authentic, high-interest literacy-supporting books.

Greta Gorsuch | Greta Readers

INSTRUCTIONAL  
THEORY,  
METHODOLOGY  
& RESEARCH

PD: LIT

## BLUEBONNET 6

### Adult Education in Aldine ISD: Why the Family and Community University?

This presentation tells the story of this new initiative in the Aldine school district in Houston, in how we build families' capacity by addressing their needs and recognizing their expertise and potential.

Iván Tamayo | Aldine ISD

PARENT &  
FAMILY LITERACY

PD: OTHER

## BLUEBONNET 7

### Unleashing Literacy: Dynamic Tools for Adults with Learning Differences

60% of adults with literacy problems have undiagnosed learning differences. Participate in activities to learn common learning differences; online screening tools; Texas diagnostic resources; research-based literacy methods.

Dr. Joan Ickes, Laura Kovalcik, Karen Coffey | Dynamic Learners, Inc.

LEARNING  
DIFFERENCES &  
DISABILITIES

PD: PAL

## RESTAURANT

### Seizing the Opportunity with GED!

We've got data, how about you? In this session we'll take a look at the GED exam, the many resources available to you and your students to support success, and more specifically GED Manager data to support your students!

Jonna Forsyth | GED Testing Service

ADULT BASIC  
LITERACY  
(HSE, ASE, ABE)

PD: OTHER

## MOCKINGBIRD A-B

### TABE Workforce Readiness - A New Reporting Suite

This session will explore how TABE 11 & 12 are now aligned to over 800 of the Bright Outlook careers posted in the US Department of Labor's Occupational Network (O\*Net).

Chasity Wright | Data Recognition Corporation

ADULT BASIC  
LITERACY  
(HSE, ASE, ABE)

PD: OTHER

**QUICK! MAKE YOUR WAY TO BLUEBONNET 4 -  
WE'RE DRAWING END-OF-CONFERENCE PRIZES  
AS SOON AS BREAKOUT 8 IS FINISHED.**

**MUST BE PRESENT TO WIN!**







**HOW MANY WORDS CAN YOU MAKE?**

4 letters or longer; must use center letter, reuse of letters allowed.

**...AND GO!**

**SEE YOU NEXT YEAR!**



LITERACY **TEXAS**

**ANNUAL** — ★ —

**CONFERENCE**

JULY 30 & 31, 2024

**COLLEGE STATION, TX**

LITERACYTEXAS.ORG/**CONFERENCE**



# LITERACY TRANSFORMS TEXAS



## Celebrate literacy in September.

Every September, we have some of the best opportunities of the year to shine a light on literacy.

September is **National Literacy Month**; September 8 is **International Literacy Day**; and every year in September we celebrate **Adult Education and Family Literacy Week** across the nation.

And with a small amount of planning, we can all make good use of these opportunities, and help to spread the word about the crucial importance of literacy to adults and families, and for a brighter future.

We'd love for you to join Literacy Texas in getting people thinking – about the meaning of adult and family literacy, and what's possible for Texas.

What does literacy mean to you? Tell us all in September!

**Thanks for being a friend of literacy, and  
thanks for joining us at the conference.**

**So much is possible  
when we work together!**



NOW GO.  
**DO GOOD.**

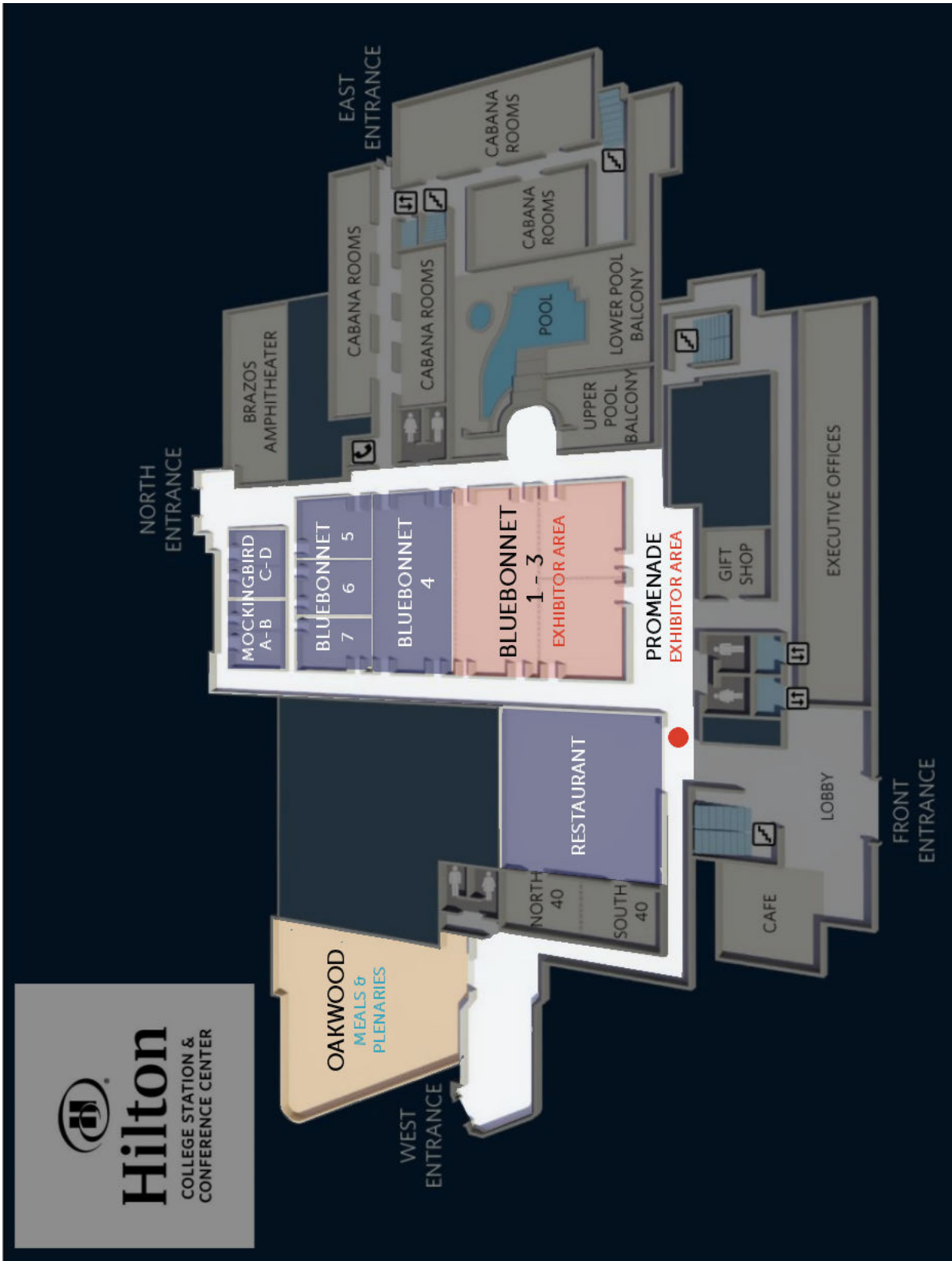
## CONFERENCE SPACE HIGHLIGHTED

**EXHIBITOR AREAS:** Bluebonnet 1 - 3 + Promenade

**MEALS & PLENARIES:** Oakwood

**BREAKOUT SESSIONS:** Bluebonnet 4, Bluebonnet 5, Bluebonnet 6, Bluebonnet 7, Restaurant, Mockingbird A-B, Mockingbird C-D

**INFORMATION + LOST & FOUND:** Registration desk, outside Restaurant ●



**CONFERENCE WIFI** NETWORK: BurlingtonEnglish | PASSWORD: BEcares

Huge thanks to conference wifi sponsor BurlingtonEnglish!